

IMPORTANT NOTES:

1. The “Flash Wizard v2.1” updater utility tool is required to load XG firmware v3.01 forward.
2. XG firmware prior to v2.27 can only be updated at the factory.
3. XG firmware at v2.27 will require an update to v2.29 using “Flash Wizard v1.1” updater utility tool prior to updating to v3.01 forward.

WARNING:

Do **NOT** attempt to upload HEX files other than the file provided with this updater utility. Doing so may cause damage to the unit requiring a factory repair.

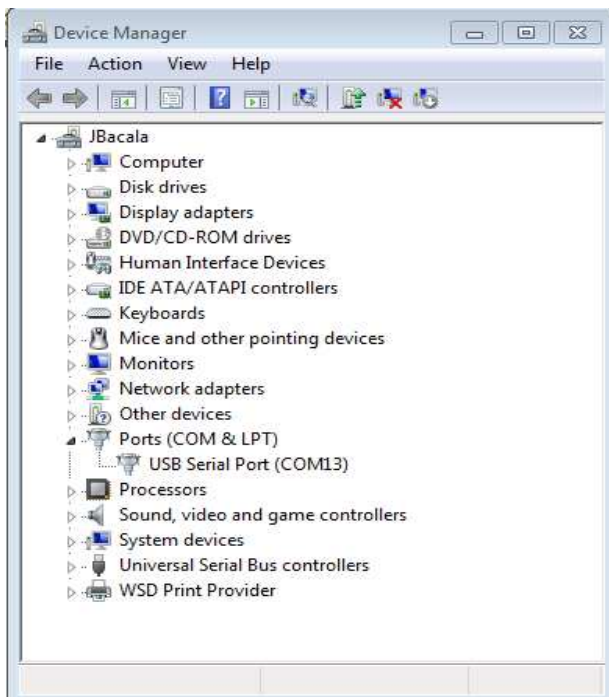
Note that the v3.01 update is only for XG standard product and should **NOT** be loaded into an XG that has customer specific firmware modifications.

Instruction to update from v2.29 to v3.01:

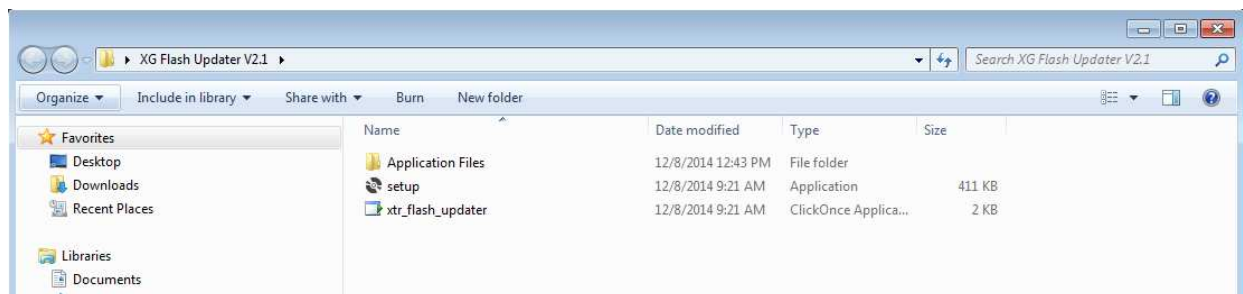
Files are located within the following folder following Zip extraction:

- 4370370-18_v3_01
1. First power up the XG unit and select a remote interface. The upgrade can either be done through **USB** or **RS232**. If using USB, note that a virtual COM port may need to be configured on the PC. Please refer to the XG User Manual for USB instructions.

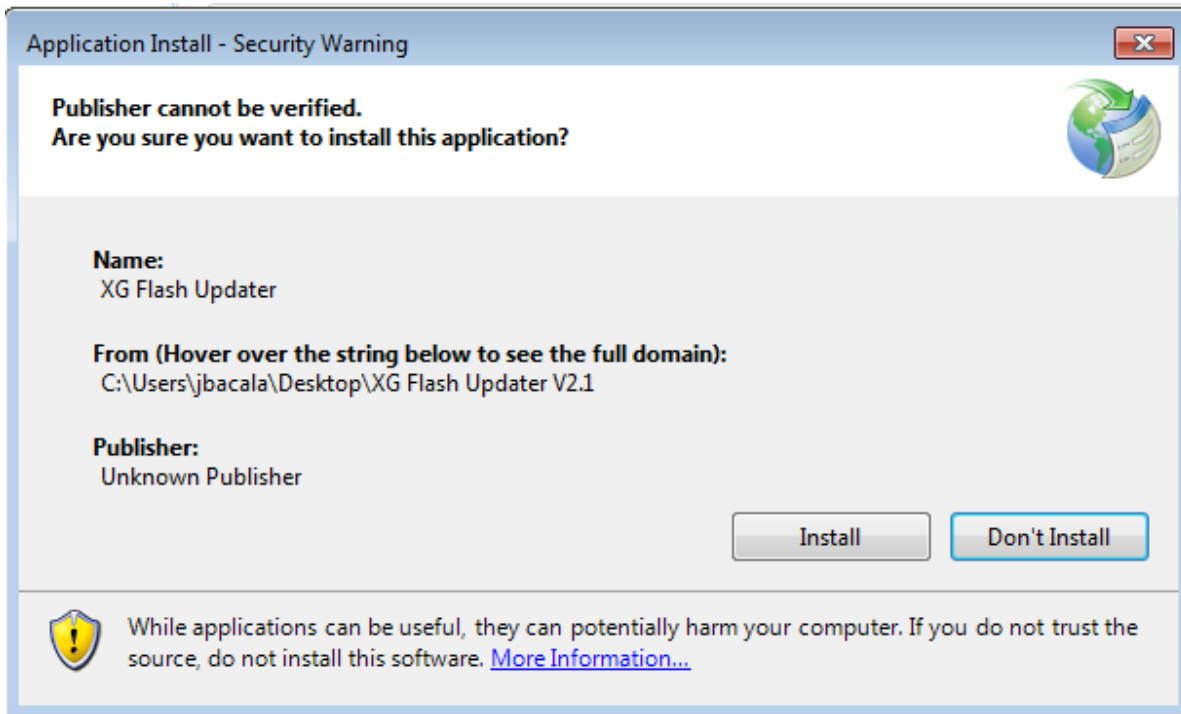




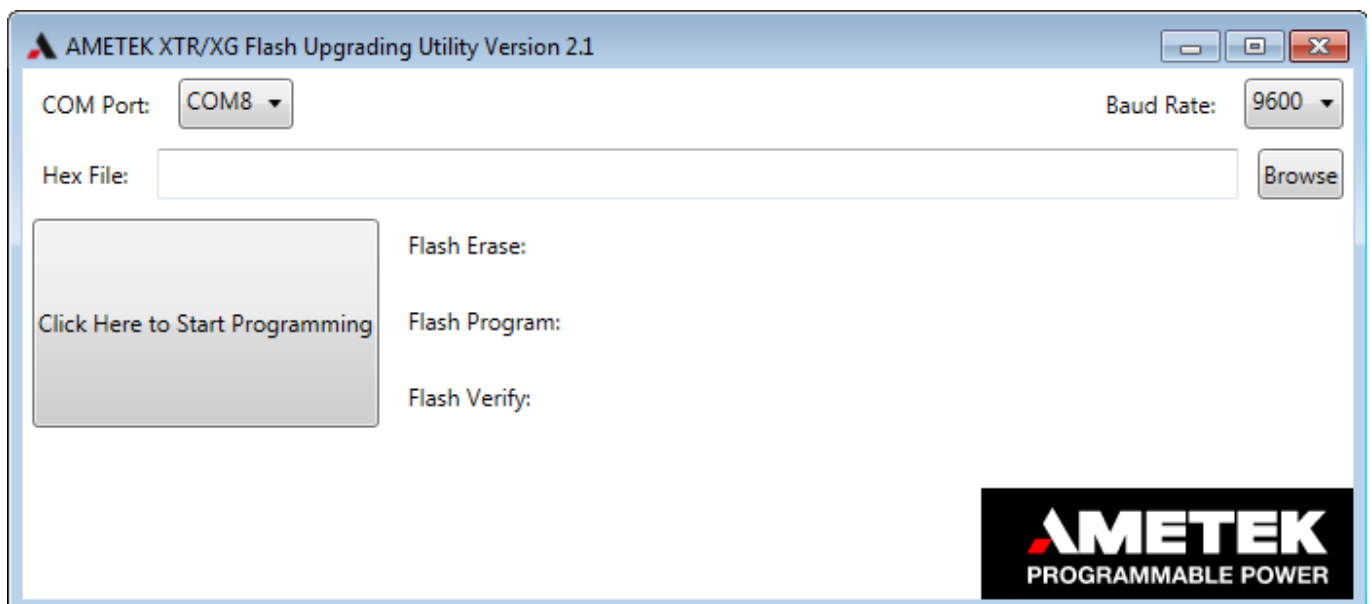
2. Open the “XG Flash Updater V2.1” folder and click “setup”.



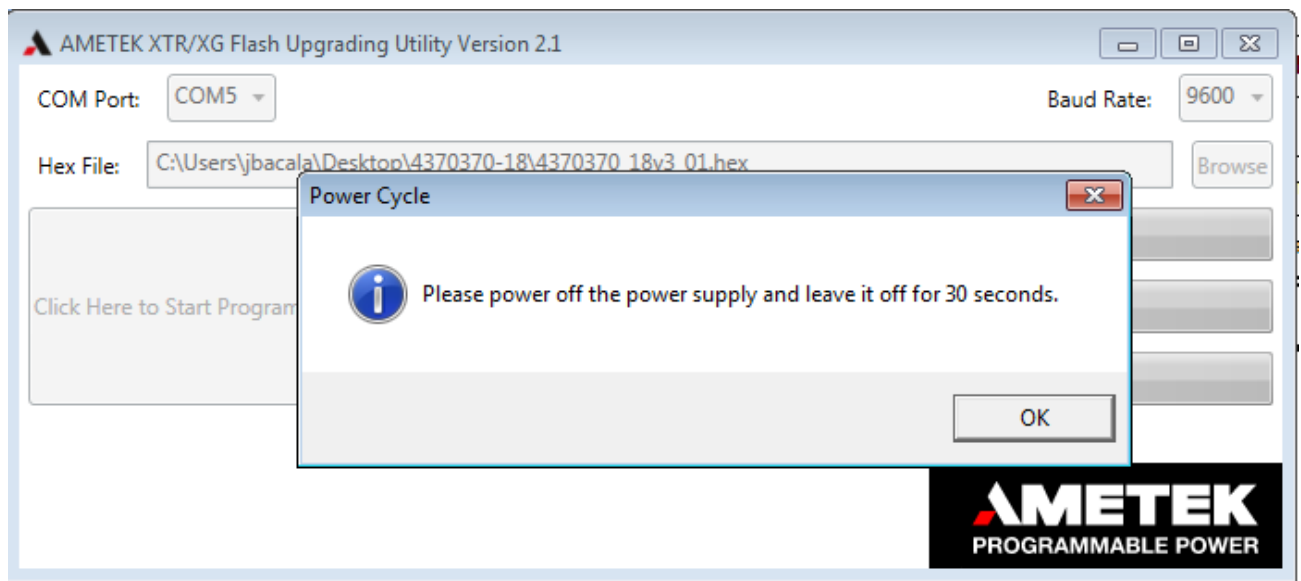
3. Click "Install" and follow the menu driven installation procedure.



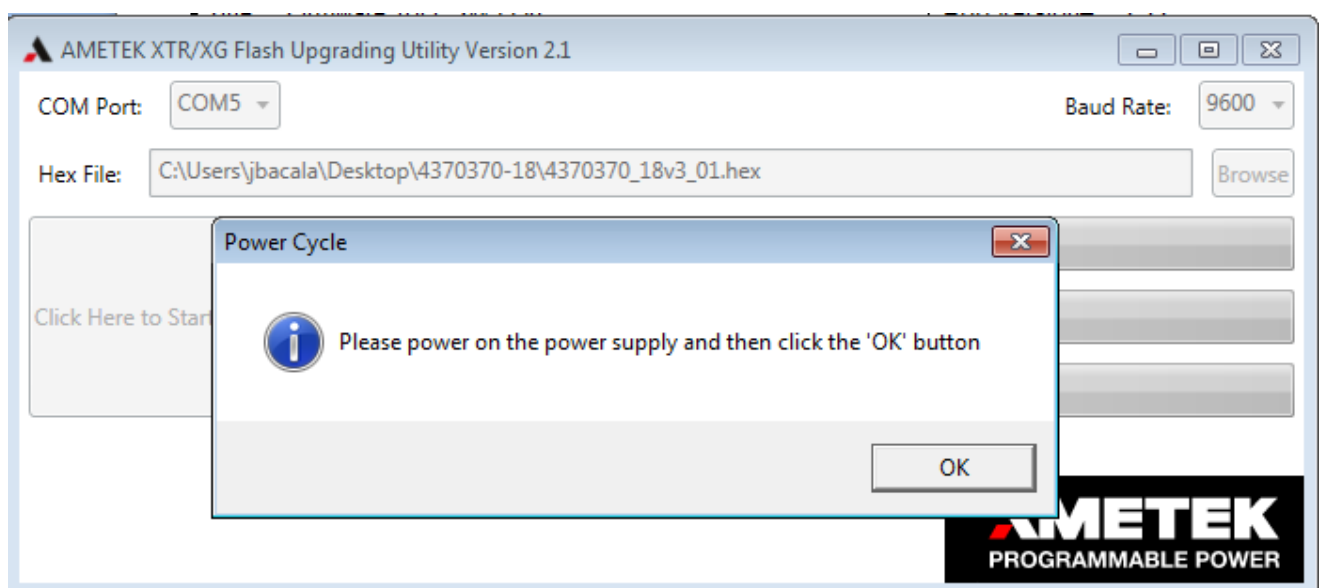
4. After the XG Flash Upgrade Utility V2.1 launches the Window shown below, it is important to verify that the baud rate is set to **9600**, and that the correct XG COM port is selected.



5. Next, click the “Browse” button to open the folder where the HEX file is located and select file “4370370_18v3_01.hex”.
6. Next, click the “Click Here to Start Programming” button to load the HEX file into the XG.
7. The following Power Cycle window message will appear. Power off unit, wait 30 seconds. Click “OK”.

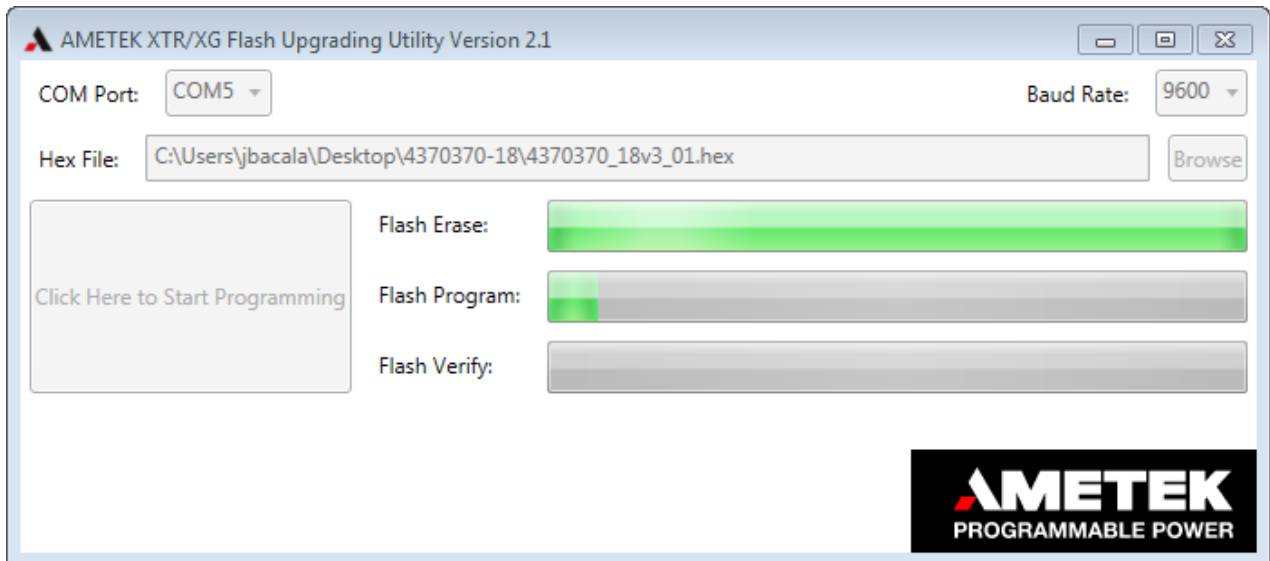


8. The following Power Cycle window message will appear. Power On unit, Click “OK”.



9. The download process will proceed.

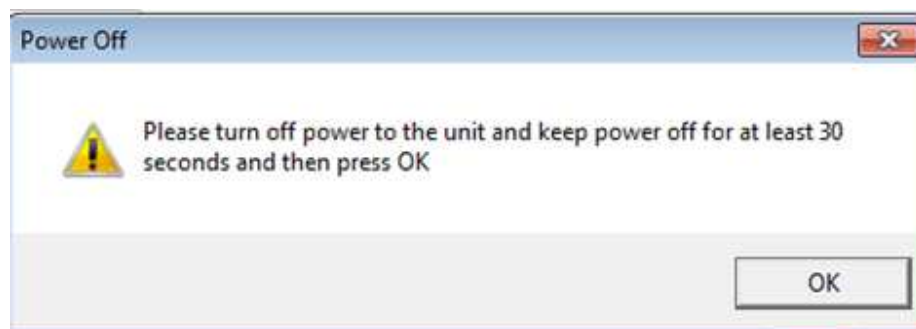
Note: A message “Attempting to connect. This may take up to a minute.” may appear at the bottom left hand corner of the window. This message will disappear once download process begins.



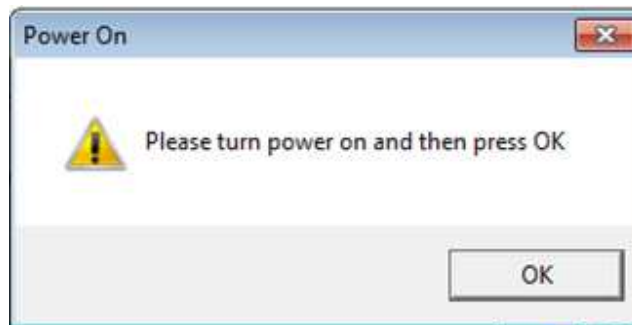
WARNING:

Do **Not** interrupt the Hex load process.

10. During the Hex load process, the front panel display will show “PROG FLA”.
11. When the load process is complete the following Power Off window message will appear. Power off unit, wait 30 seconds. Click “OK”.

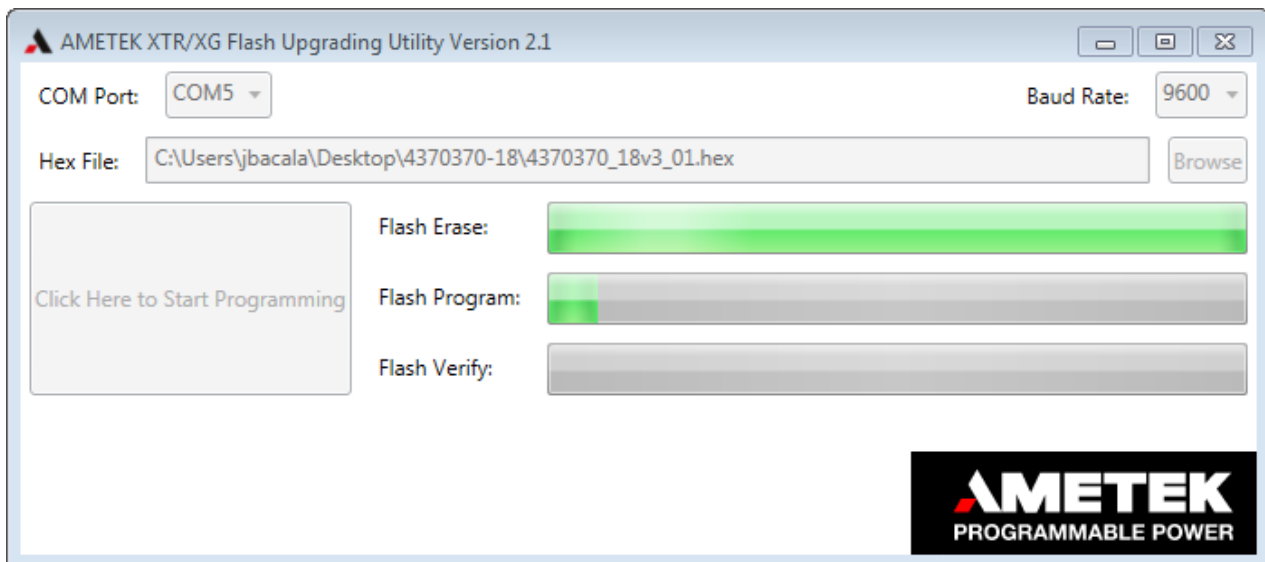


12. The following Power ON window message will appear. Power On unit, Click “OK”.

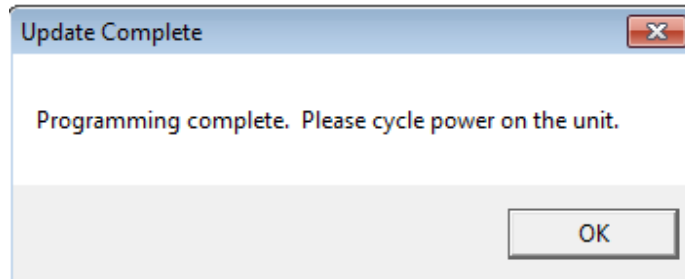


13. The download process will proceed.

Note: A message “Attempting to connect. This may take up to a minute.” may appear at the bottom left hand corner of the window. This message will disappear once download process begins.



14. The following message will appear after update has been completed. Power Cycle the unit. After unit is power cycled, the front panel will show “VER 3.01” momentarily during the XG boot up sequence.



15. If the display shows the message “FLA FAIL”, then a soft reset will be required. This is performed by pressing and holding “MAIN” and “AUX” buttons from the front panel for a few seconds while the XG is powered up using the front panel power switch. When the soft reset command is recognized, then the XG will display “PSU CLR”.
16. Power cycle using the front panel power switch and verify that the XG powers up without showing the “FLA FAIL” message.
17. The firmware update procedure is now complete. Turn off the front panel power switch.
18. Disconnect the programming cable and close the XG Flash Upgrade Utility V2.1.